

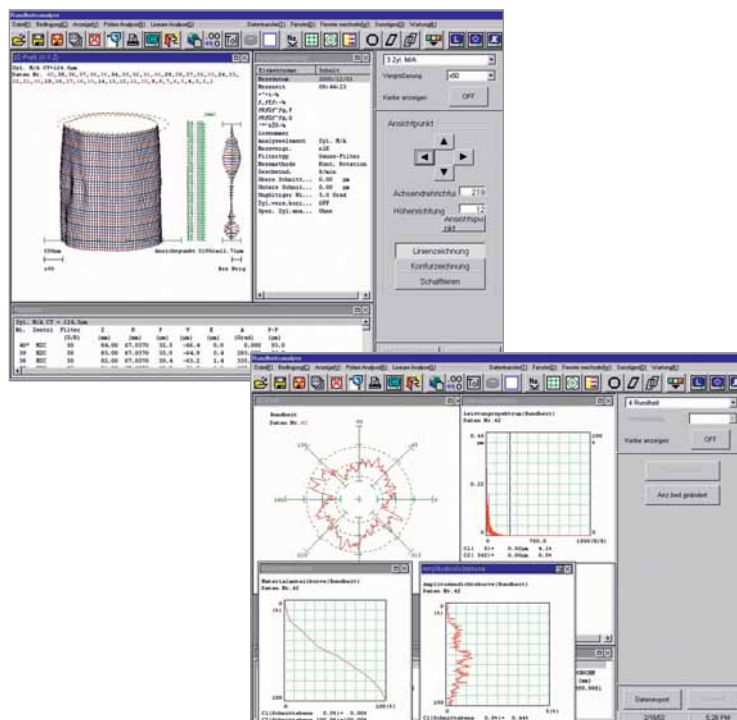
Rondcom 47/55

The highly accurate form measuring systems with manual or complete CNC-controlled rotary table for large workpieces.

- Fast, easy and precise completion of form measuring tasks
- Very high accuracies resulting from rotary table on air bearings
- TIMS measuring software with assistant function for centering and leveling with Rondcom 47
- Automated fast tilting and centering of the workpiece with Rondcom 55
- CNC programming from measurement to evaluation to printout, easy with teach-in
- Optional manual or CNC-controlled detector-and-stylus system
- Optional with incremental glass scale also in the R axis
- Standard machine with Z = 350 mm and 60 kg max. load
- Variable measuring range and probing force
- Numerous possible variations



Rondcom 47 with manual rotary table



Rondcom 55 with fully-automatic rotary table

